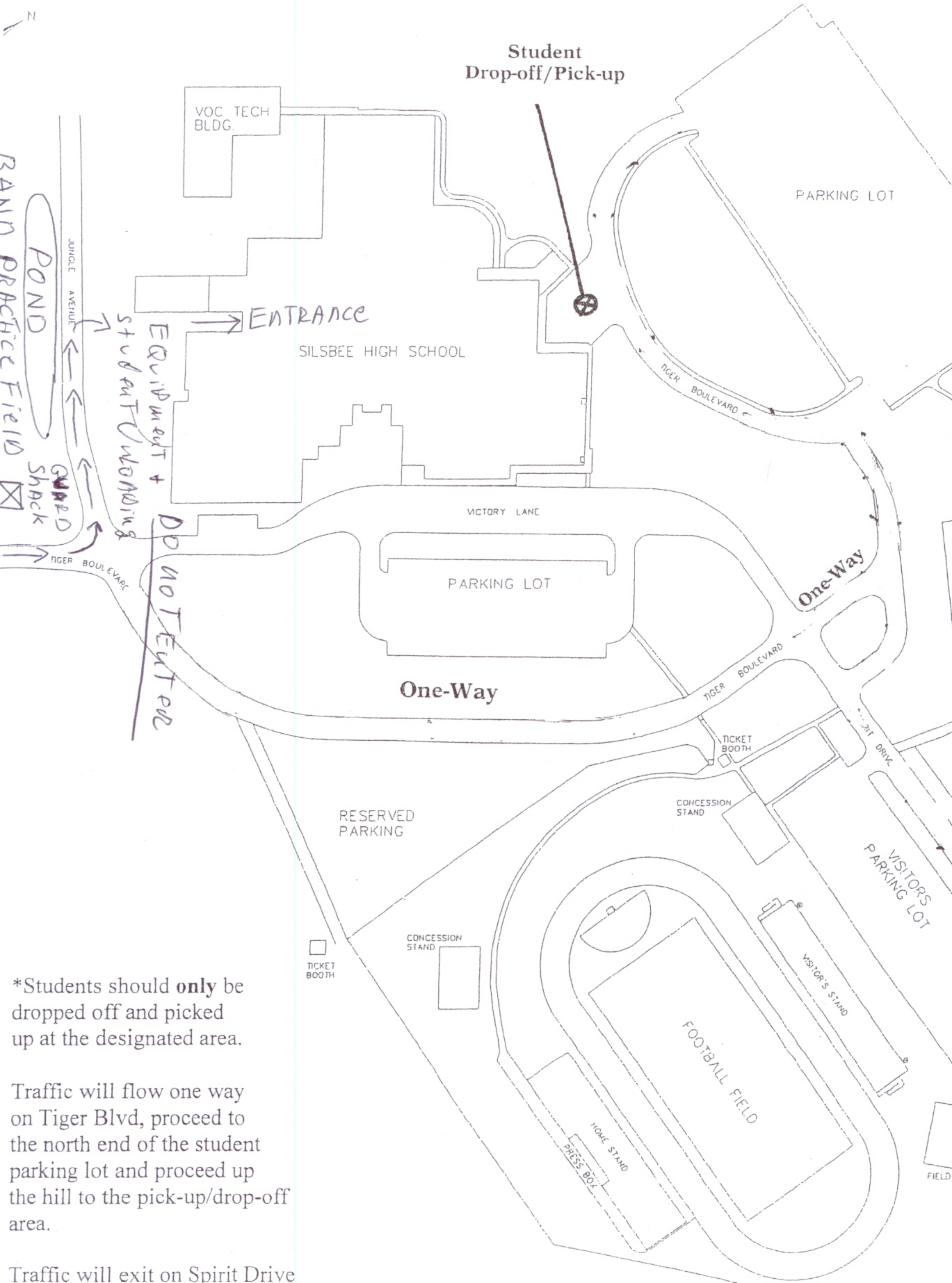


Silsbee High School Traffic Pattern for Student Drop-off and Pick-Up



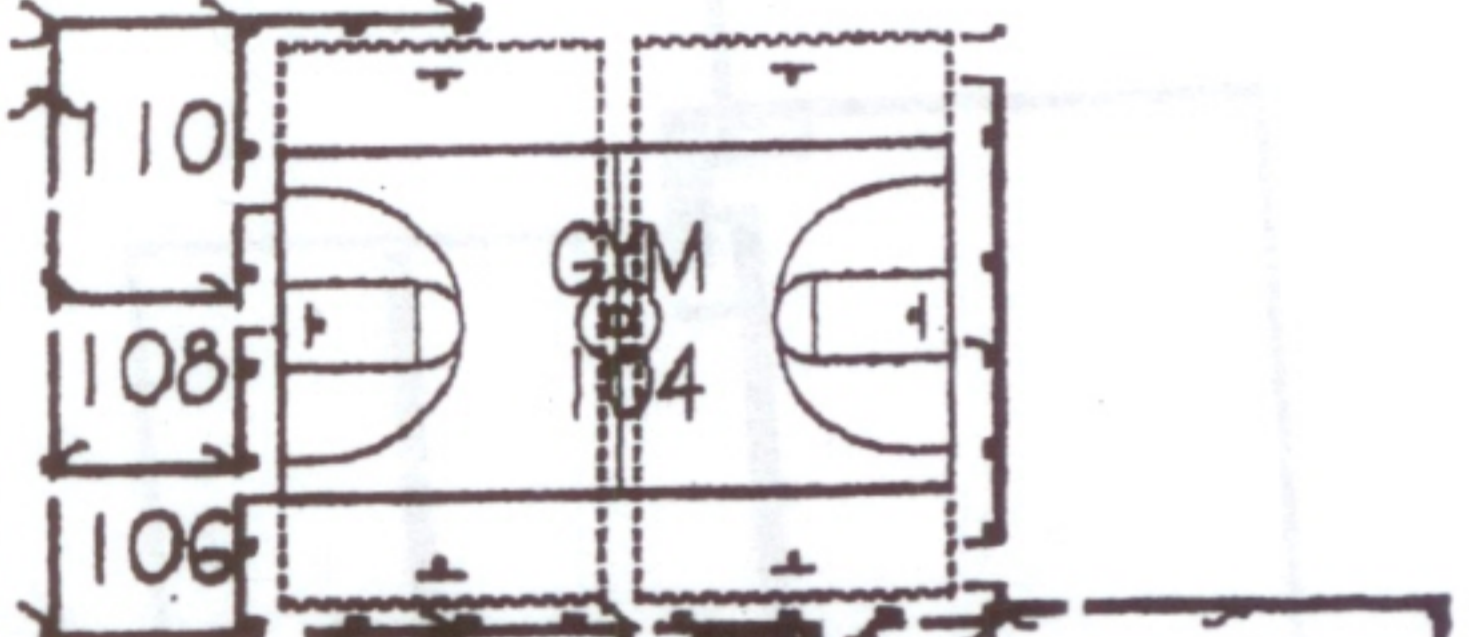
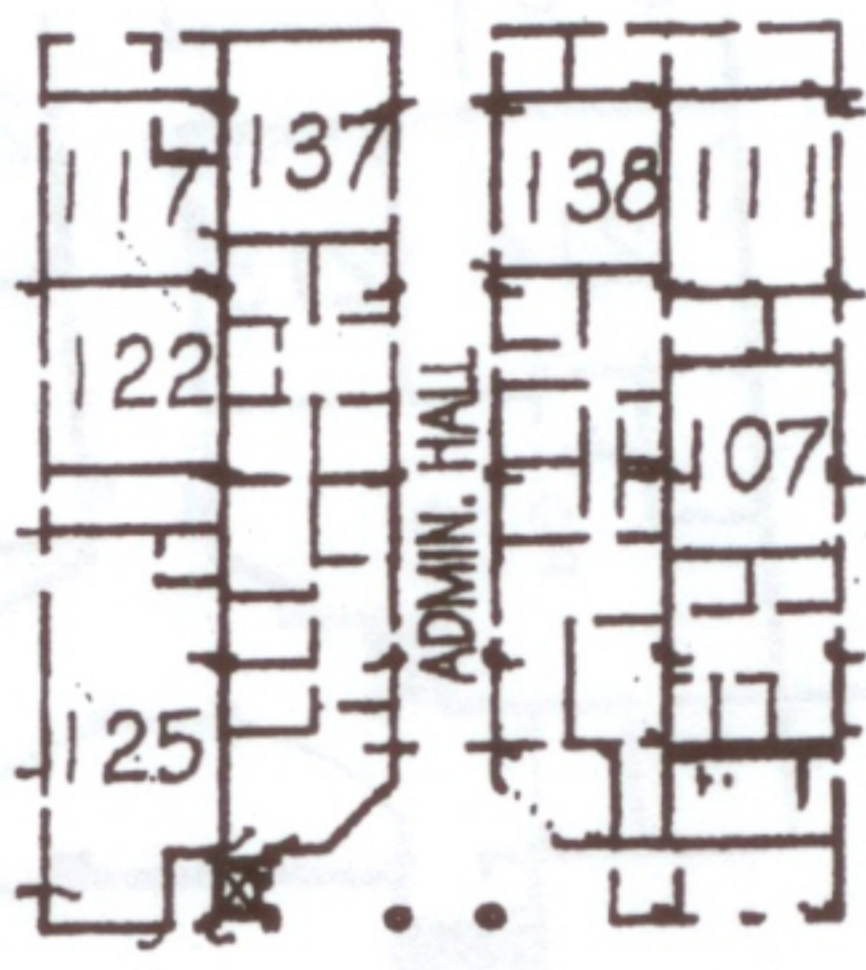
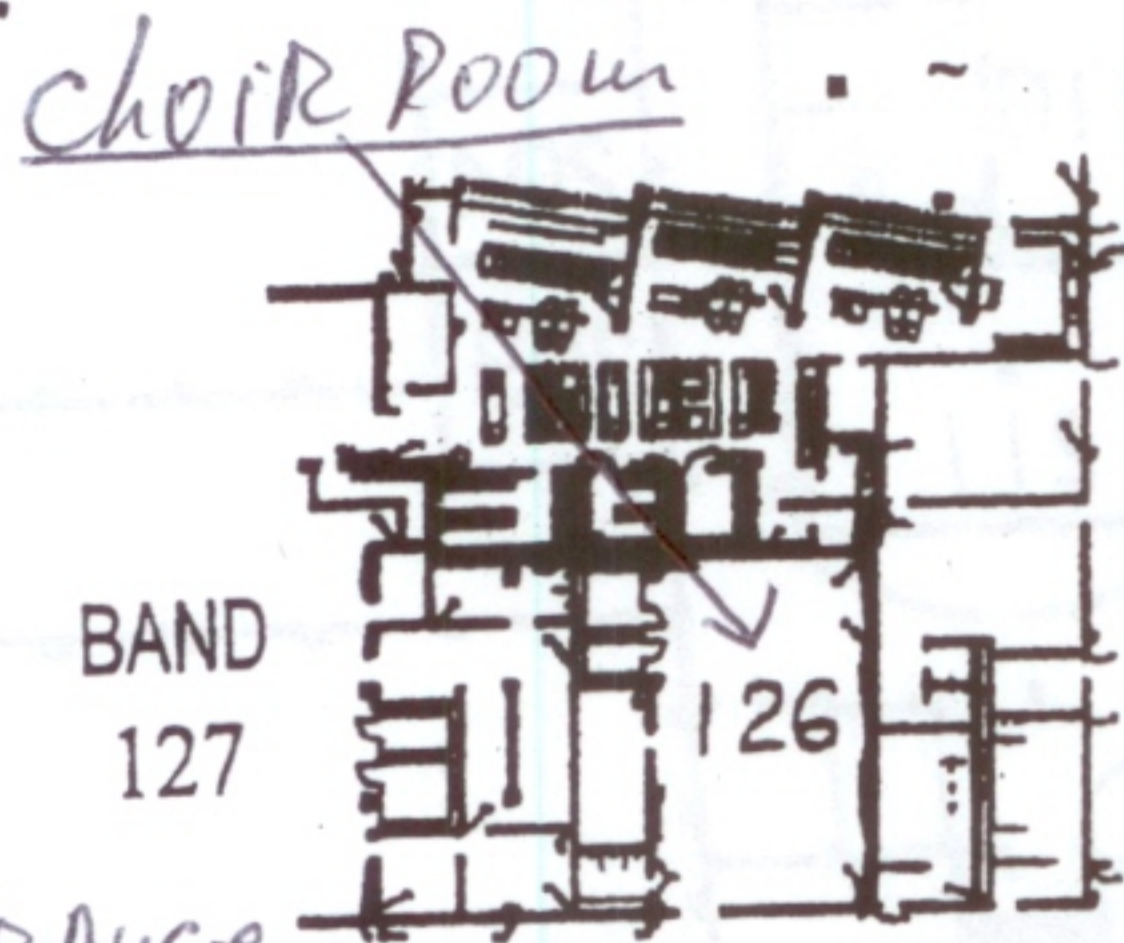
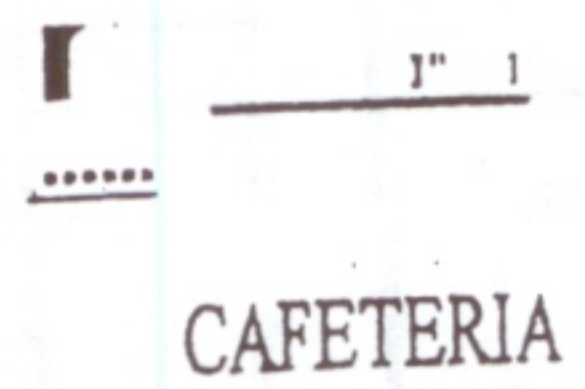
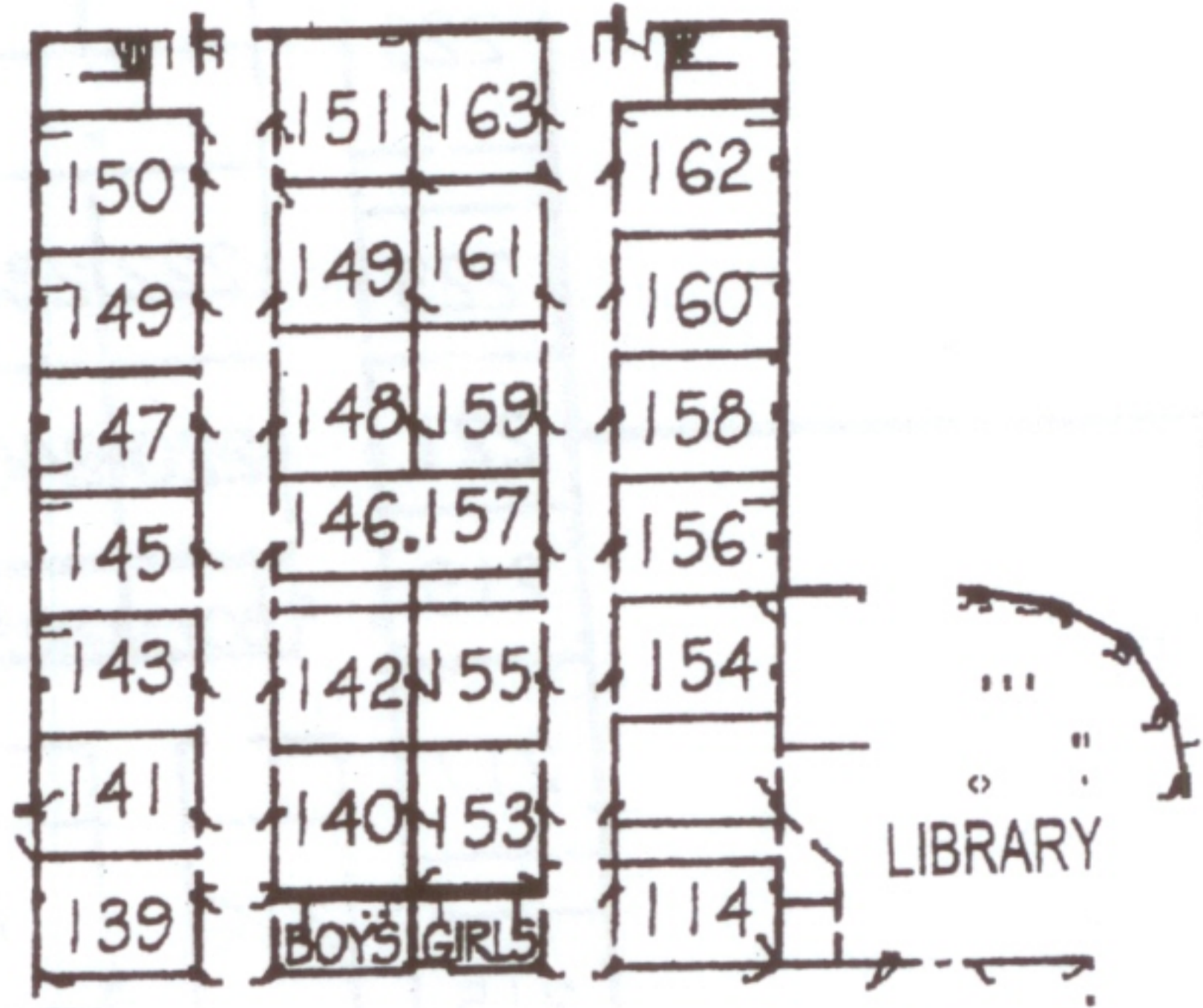
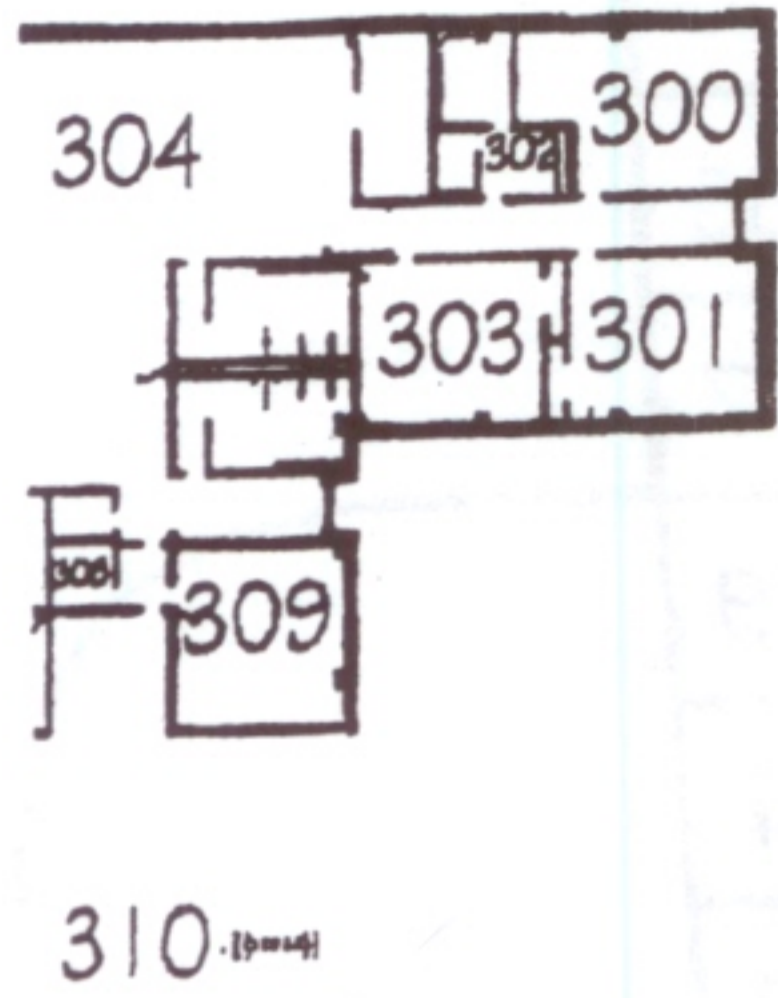
*Students should **only** be dropped off and picked up at the designated area.

Traffic will flow one way on Tiger Blvd, proceed to the north end of the student parking lot and proceed up the hill to the pick-up/drop-off area.

Traffic will exit on Spirit Drive

Silsbee High School

First Floor



UNLOADING AREA
PERCUSSION EQUIPMENT ENTRANCE

