



UNIVERSITY INTERSCHOLASTIC LEAGUE
MUSIC REGION VII

TONY CLINES, EXECUTIVE SECRETARY

September 20, 2012

The UIL Region Marching Band contest for Conferences AAA, AAAA and AAAAA will be held Saturday, October 20, 2012 at the Waco ISD Athletic Complex. The directors, students and booster parents representing the band programs in the Waco ISD look forward to hosting this event and are preparing to make this contest a positive and enjoyable experience for you and your students.

This packet contains all of the preparatory information for this season's contest. In the event that you have policy-related questions, please feel free to contact the Executive Secretary at the contact information listed below. Logistical questions should be directed to the site host.

As you will note from the enclosed schedule, we are slated for a full day of performances. It is critical that everyone adhere to the published contest schedule. Thus, it is strongly recommended that directors have their bands arrive at the WISD Athletic Complex no less than thirty (30) minutes prior to the beginning of their scheduled warm-up time. Please be aware that allowances will not be made for those bands arriving late for either their warm-up or performance times.

Once again, we look forward to your band's participation. If I can provide any additional assistance, please contact me at 254-755-9473. In the event of an emergency on the day of the contest, please contact the Host Administrator on duty, Jerry Gibson at 254-652-2939.

Sincerely,

Phillip J. Morgan
Contest Host
WISD Director of Fine Arts

Enclosures:

- Marching Band Contest Procedures
- Bus and Spectator Directions
- Parking and Site Maps
- Contest Schedule & Staging Plan (2 Views)
- Marching Band Timing Rule Clarification
- Weather Addendum
- Electronics / Generator Containment Agreement Form
- Approved Meal Vendors for the Contest
- Powerpoint Supplement

UNIVERSITY INTERSCHOLASTIC LEAGUE REGION MARCHING BAND CONTEST

Contest Procedures

ENTRY FORMS

If you did not send the Announcer's Script and Form No. 1 with your entry, please give these forms to the monitor at the check-in station as soon as you arrive at the stadium (before going to warm-up with your students). Please note that Form No. 1 must be signed by your school principal or superintendent. In addition, a roster of student performers in alpha order must be submitted to the contest office prior to your band's performance.

SCHEDULE & MAPS

A performance schedule is attached. The schedule is very specific to timing in order to keep the contest running efficiently and on time for all of your bands. The enclosed maps clearly display all of the locations you and your students will need to know as well as instructions for the logistical structure of the event. Please take a moment with your students and review the staging areas and map before coming to the contest. The maps also indicate where bus and spectator parking lots are located. There will be a \$2.00 parking fee per vehicle for spectators. The fee does not include in and out parking lot access. Please relay this message to your students and their supporting family and spectators.

ARRIVAL, PARKING, UNLOADING, LOADING

Directions:

From North or South IH-35, exit on South New Road [Exit #331]. Go West approximately one (1) mile and you will arrive at the Waco ISD Athletic Complex.

Alternate Route:

From Highway 6 (Loop 340), exit Bagby Avenue. Go North on Bagby Avenue approximately one (1) mile and you will arrive at the Waco ISD Athletic Complex (on your left). Busses should enter the complex from the Bagby Avenue entrance; Spectators should enter from South New Road to help traffic flow during the contest.

All Busses will park in the designated Northeast Parking Lot (see map). Bands will load/unload in the bus parking lot. Please check in before unloading your busses. The monitor's check in station is located at the Bagby Street entrance. **No spectators will be allowed to park in the bus parking.** Please advise your school administrators, staff and band parents of this prior to the contest.

Percussion and Color Guard Equipment (ONLY) may be unloaded at the pit entrance gate no sooner than thirty (30) minutes prior to your scheduled performance time. There will be a guide on site to direct you. Equipment trucks may then proceed to the South end of the stadium to wait for the conclusion of your band's performance and reload equipment. Monitors will assist in showing your drivers where to park.

DRESSING ROOMS / RESTROOMS

Participants may use the restrooms located in the concession stand concourses at the East entry gate as dressing rooms. Please have a chaperone with your students using these areas to ensure that the rooms are left free of litter, clothing bags, etc. It is important that every effort be made to keep the complex restrooms clean and usable for everyone in the contest.

MONITORS

Monitors will be expecting you approximately thirty (30) minutes prior to your warm-up time. Monitors will serve as escorts throughout your participation in the contest. They will assist you in maintaining the contest schedule, solving logistical problems and answering your questions. Please give them your total cooperation and professional courtesy so that they may be of maximum service and efficiency to you and your students.

MOVEMENT TO STAGING AREA 2 (WARM-UP AREAS)

Outdoor warm-up areas will be available for each band prior to its performance. Your monitor will escort your band to the appropriate location at the assigned warm-up time. Be prepared to move to the warm-up area no less than fifteen (15) minutes prior to your scheduled warm-up time. If you wish to use a tuner, you must provide your own.

DO NOT PLAY TOWARD THE STADIUM PERFORMANCE FIELD DURING YOUR WARM UP. As a courtesy to all other performing groups, please also instruct your students to keep their volume at a minimum during their warm-up.

Please be advised that any type of warm-up activity must be limited to your designated warm-up location during the specified time. Students are not allowed to participate in any type of warm-up activity, excluding a review of marching or playing fundamentals, anywhere other than the designated warm-up area.

MOVEMENT TO STAGING AREA 3 (WATER & STADIUM ENTRY)

Your monitor will advise you when it is time to move to the entry gate. In order for the contest to remain on schedule, it is essential that you be prepared to proceed promptly and efficiently to the staging areas as directed by your monitor.

MOVEMENT TO STAGING AREA 4 (PERFORMANCE FIELD)

Please note that your performance time will begin exactly five (5) minutes after your band has been cleared at the entrance ramp and instructed to enter the field. Since single-file entrances generally take more time than the allotted five minutes, it is strongly recommended that your band's entrance to the field be designed for movement of the band into position as quickly as possible. Bands that are ready ahead of time may proceed by signaling the press box. The announcement will be read and the performance time will begin.

FIELD MARKINGS IN WACO ISD STADIUM

The Waco ISD Stadium field is marked with the current Texas high school football hash marks. They are sixty (60') feet from the sideline and will be similar to the markings you are accustomed to seeing on all high school football fields in Texas. Yard line numbers are six (6') feet tall and the bottom of the numbers are twenty one (21') feet from the sideline.

OFFICIAL TIME

Preparation and performance time will be kept according to the guidelines listed in the current U.I.L. Constitution and Contest Rules under Section 1105 (g) (3) Official Time.

Each band will move to the stadium fifteen (15) minutes prior to the scheduled performance time. The five (5) minute pre-performance time may be used as you see fit. At the four minute mark, your band will be announced and the band's performance must begin within sixty (60) seconds. At the conclusion of its performance, each band will have two (2) minutes to clear the marching surface of all equipment, instruments and props and exit the marching field.

The band will be **penalized** one rating if:

- A band leaves the field in less than five (5) minutes or fails to complete its performance in eight (8) minutes.

The band will be **disqualified** according to CCR Section 1105 (g) (3) (f) Official Time if:

- a band fails to be clear (outside the sideline or end zone) or continues to use instrumental or verbal cadence at the end of the 'two minutes' period.

Please take time to review the **Marching Band Contest Timing Procedures** and **Timing Rule Clarification** provided later in this packet prior to attending the contest.

POST PERFORMANCE (STAGING AREA 5 - PHOTOGRAPHER)

Your monitor will escort your band through the exit gate and to the location where the photographer is set up if you wish to have a picture of your band taken. You may return to your busses to re-load and re-enter the stadium to observe the remainder of the contest. Please have your students sit as a group in the 'home' stands under the press box to allow room for all spectators at the contest.

CONTEST RESULTS

Directors may pick up comment sheets and taps in the press box after ratings have been announced. Ratings will be announced at each break. Bands receiving a 1st Division rating may advance to the State Marching Band Contest. Directors of Conference AAA and AAAAA bands advancing to the Area Marching Band Contest should report to UIL Executive Director Tony Clines for State Marching Contest information.

PRESSBOX ACCESS

Press box access is limited to judges, contest officials, and workers. The only entrance to the press box is by elevator. To pick up contest results take the elevator to press box level 3.

VIDEO TAPING

Live It Again Productions is the official video photographer and will be taping from the press box. All other taping may be set up anywhere outside the press box and a battery pack must be used for power.

Directors are asked to please remind your students films and tapes are being made of all performances and that noise must be held to an absolute minimum.

CONCESSIONS

Concession stands are located at each corner of the stadium. Concession stands on the press box side will be open all day. Booster parents will be operating the concessions and they would appreciate your patronage. A wide variety of items to eat and drink will be available.

Should you prefer to have a meal brought into the athletic complex for your band, please be advised that only those vendors that have signed an agreement with the Waco Independent School District are authorized to deliver food to the stadium. Please be aware that those vendors have signed a contract with the district giving them exclusive rights to provide food on district property. For your convenience, an informational sheet is enclosed to assist you in contacting those vendors. Should you select another vendor, please note that the food may not be delivered nor consumed on district property.

BAND CONDUCT

To control crowd noise at the contest, we ask that you:

- please review with your band the importance of proper and courteous conduct while other bands are performing, and
- designate directors or chaperones to sit with your band to assure that proper conduct is maintained.

REMINDERS

Any questions and/or problems should be directed through your monitor to the contest staff in the press box.

Bands may play ONLY at the following times:

- A. at your assigned warm-up site (facing away from the stadium),
- B. on the field during your five minute pre-performance warm-up, and
- C. during your contest performance.

Contact with judges at any time is prohibited.

Be sure to inform your band parents that balloons are prohibited at any UIL event.

Bus and Spectator Directions for Marching Band Contests At the Waco ISD Sports Complex

The following constitutes specific directions for bus unloading, loading and traffic flow during the Marching Band Contest. The following procedures have been developed to get each band to their warm-up location efficiently, minimize the level of traffic congestion around the stadium and ensure the safety of both participants and spectators at the event.

Please read these directives carefully and make sure your driver(s) and fans fully understand the procedures as outlined.

Competing Bands – Bus and truck Unloading and Loading

ACCESS TO STADIUM PARKING FACILITIES

The Waco ISD Athletic Complex is located at the intersection of New Road and Bagby Avenue just South of Waco. From Interstate 35, take the New Road Exit [#331] and proceed West approximately one (1) mile to the intersection of New Rd. and Bagby Ave.

BUS PARKING

All busses will enter the stadium through the Bus Entry Gate [See Parking Information Map, attached] on Bagby Ave. and will park in the Bus Parking Lot.

EQUIPMENT TRUCK

Forty-five (45) minutes prior to your band's scheduled performance time, the equipment truck may proceed along the drive in front of the fieldhouse to the pit entry gate at the Northwest corner of the stadium. A guide (*Sarah Yarnell, Chavez MS Asst. Band Dir.*) will be on site to assist you.

Each band will be allowed fifteen (15) minutes to unload equipment. Trucks must then be moved to the south end of the stadium (*see attached Parking Map*) in order to collect all equipment after your band has performed. **Once equipment has been loaded, the truck must return to the Bus Parking Lot.**

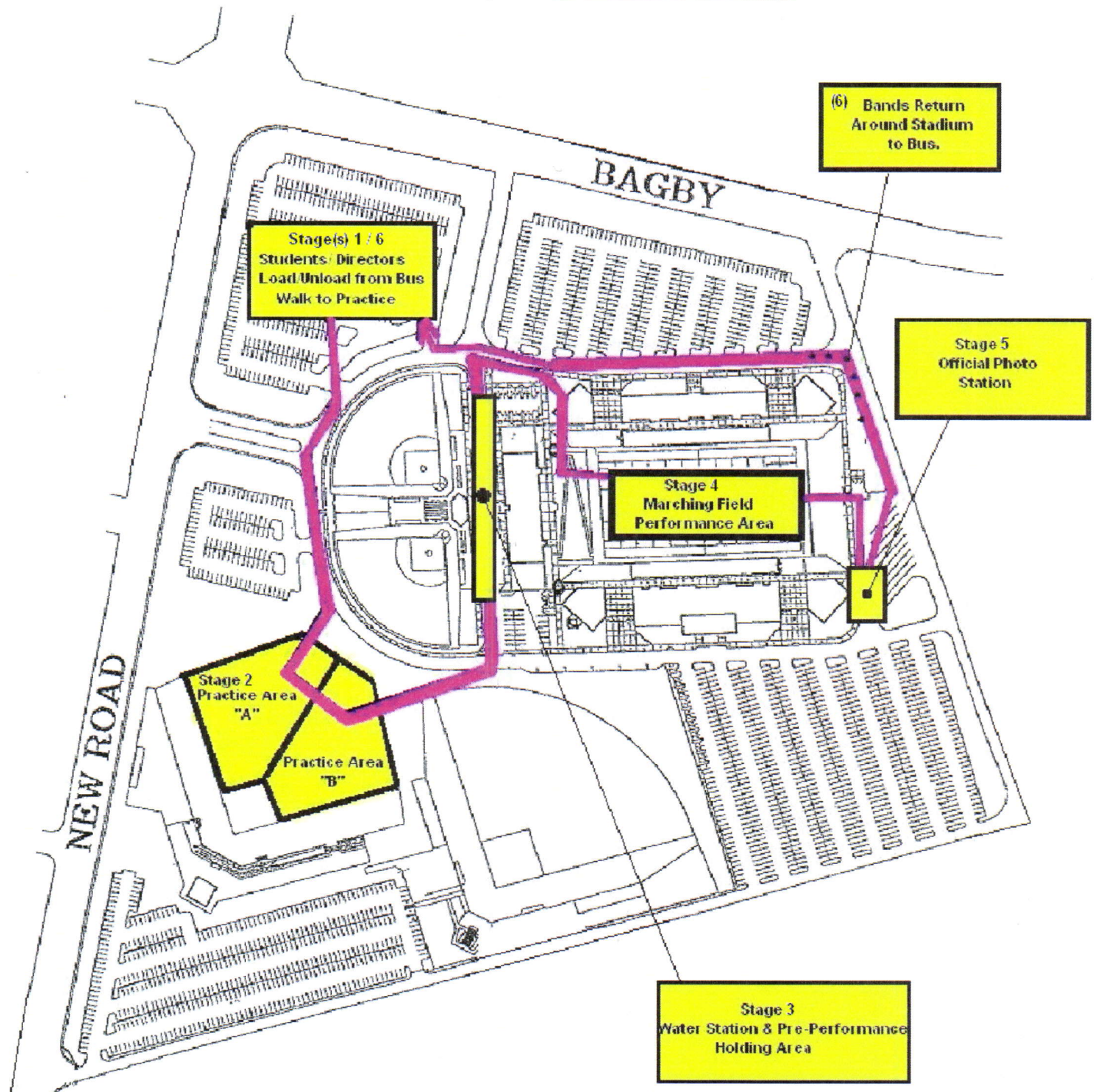
UIL Region VIII
Marching Contest
Performance Schedule

Warm-up	Move	Perform	Conference	School	Director	Fee	Form 1	Comp.	Intent	Script
8:45	9:15	9:30	AAA	China Spring	Pam Hyatt					
9:00	9:30	9:45	AAA	West	Steve Hart					
9:15	9:45	10:00	AAA	College Station	Eric Eaks					
9:30	10:00	10:15	AAA	Gatesville	Mike Devenport					
9:45	10:15	10:30	AAA	Lampasas	Richard Hooper					
10:00	10:30	10:45	AAA	Fairfield	Bill Large					
10:15	10:45	11:00	AAA	Groesbeck	Collin Anderson					
10:30	11:00	11:15	AAA	Robinson	Robert Vetter					
10:45	11:15	11:30	SCHEDULED		BREAK					
11:00	11:30	11:45	SCHEDULED		BREAK					
11:15	11:45	12:00	SCHEDULED		BREAK					
11:30	12:00	12:15	AAA	La Vega	Tom English					
11:45	12:15	12:30	AAA	Mexia	Kelly Rushfeldt					
12:00	12:30	12:45	AAA	Hillsboro	Kenneth Pointer					
12:15	12:45	1:00	AAA	Lorena	Marcus Bryant					
12:30	1:00	1:15	AAA	Madisonville	Stephanie Schmidt					
12:45	1:15	1:30	AAA	Connally	Jacques Brown					
1:00	1:30	1:45	SCHEDULED		BREAK					
1:15	1:45	2:00	Conference AAA		Results Announced					
1:30	2:00	2:15	AAAA	Corsicana	Bre Osbourn					
1:45	2:15	2:30	AAAA	Rudder	Robert Quick					
2:00	2:30	2:45	AAAA	Waco	Scott J. Stulir					
2:15	2:45	3:00	AAAA	University	Archie Lee Hatten IV					
2:30	3:00	3:15	SCHEDULED		BREAK					
2:45	3:15	3:30	Conference AAAA		Results Announced					
3:00	3:30	3:45	AAAAA	Belton	Scott Dudley					
3:15	3:45	4:00	AAAAA	Harker Heights	David Norris					
3:30	4:00	4:15	AAAAA	Killeen	Spencer Gregg					
3:45	4:15	4:30	AAAAA	Shoemaker	Michael Farmer					
4:00	4:30	4:45	AAAAA	Copperas Cove	Randy Kelley					
4:15	4:45	5:00	SCHEDULED		BREAK					
4:30	5:00	5:15	AAAAA	Ellison	Jeff Smith					
4:45	5:15	5:30	AAAAA	A&M Consolidated	Van Henry					
5:00	5:30	5:45	AAAAA	Midway	Larry Brown					
5:15	5:45	6:00	AAAAA	Temple	Robert Medina					
5:30	6:00	6:15	AAAAA	Bryan	Rob Towell					

Waco ISD Sports Complex

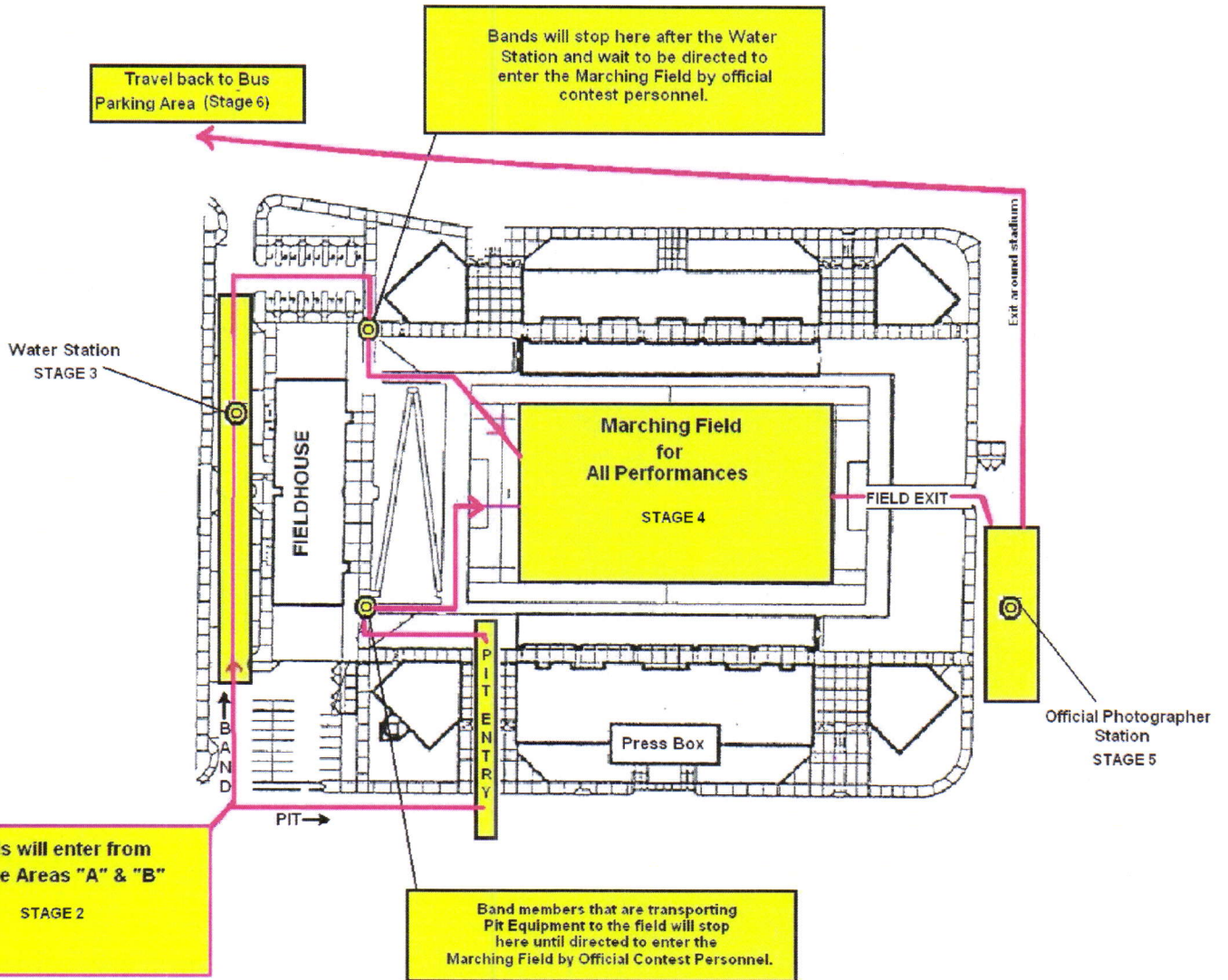
3A, 4A, 5A UIL Marching Contest
Saturday, October 20, 2012

Staging Area (Progression) Map
for Competition Schedule
Please direct your band to follow
staging plan as closely as
possible on the contest day.



**ZOOM STADIUM VIEW
STAGING MAP**

Waco ISD Sports Complex
3A, 4A, 5A UIL Marching Band Contest
Saturday, October 20, 2012



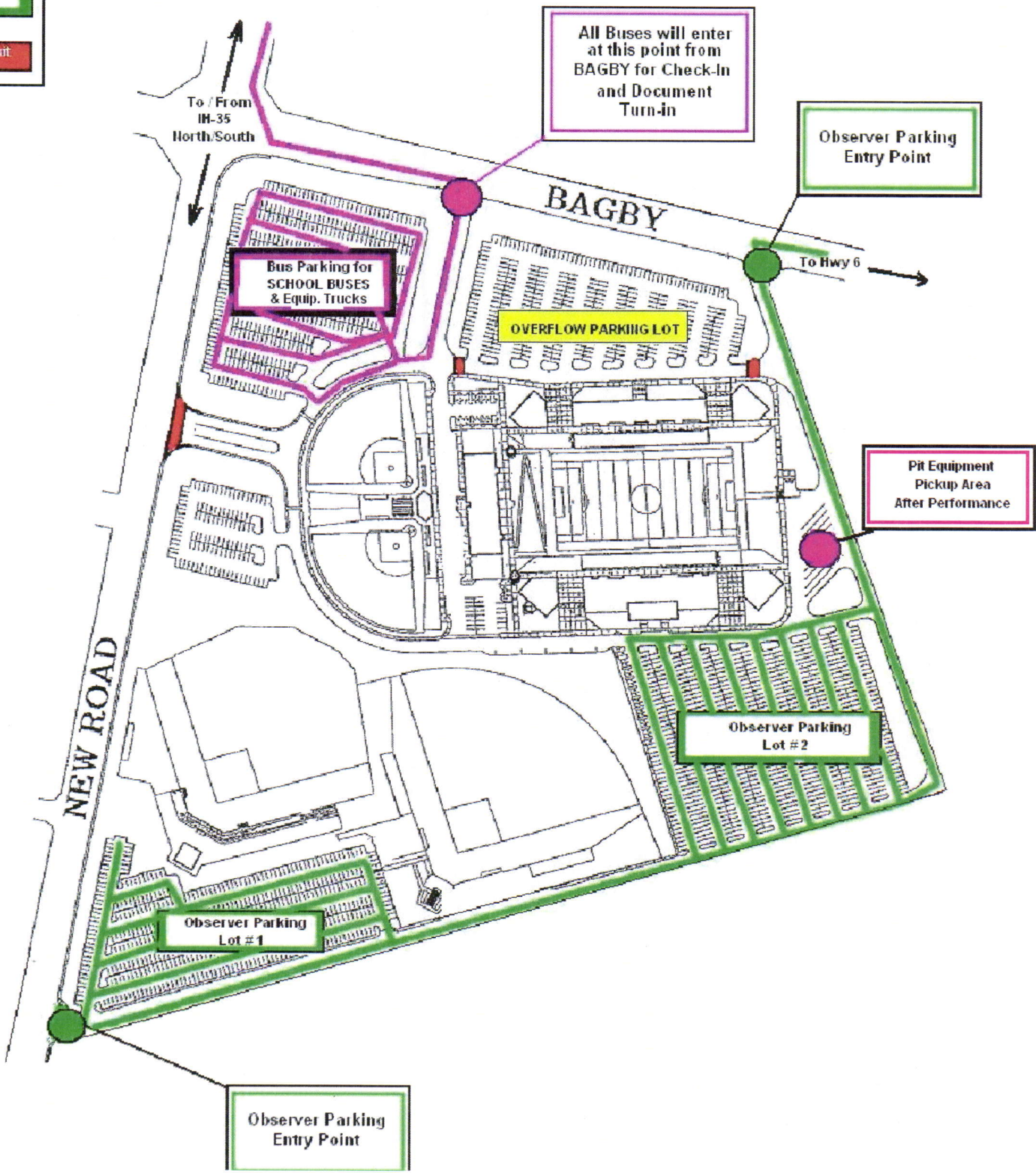
Waco ISD Sports Complex
3A, 4A, 5A UIL Marching Band Contest
Saturday, October 20, 2012

\$2.00
Parking Cost
Per Vehicle

**Parking
Information**

Parking Key

- Bus Entry/Exit Route to WISD Stadium
- Observer Parking Areas
- No Entry / Exit



MARCHING BAND CONTEST TIMING PROCEDURES

We will run the scoreboard clock as a guide only for directors entering and leaving the field of performance. **The official time will be kept with a stop watch in the press box.**

The official timer will run two time periods - a five minute clock for entrance, set up, warm up, etc. - and an eight minute clock for your performance time. If you are late leaving the warm up area enroute to the ready position, you will be using your clock time. Please note that all time periods will begin on schedule.

- When the band is released from the "ready area" the five minute pre-performance period will begin. The five minute time period will begin exactly five minutes prior to your scheduled performance time. You may use all of the five minutes, or as much as you wish, to prepare for your performance – this may include cadences, lineup, tuning, "first notes" - or anything necessary to prepare for your performance.
- If you use the entire time, the band will be announced at the four minute mark and you must begin the performance within 60 seconds. The beginning of the announcement will signify that the band's performance **must begin within 60 seconds.**
- If you do not need the full five minutes and would like to begin before the clock expires, ask your monitor to notify the press box and the announcement will be read.
- Your performance time will begin:
 - (a) on the first sound or the first step following the announcement,
 - OR
 - (b) at the end of five minutes, whichever comes first.

As stated in the C&CR: "Each competing band must occupy the football field for not less than five nor more than eight minutes. Any band that leaves the field in less than five minutes or fails to complete its performance in eight minutes shall be penalized one rating."

NEW (1997) TIMING RULE CLARIFICATION

"It is the intent of the timing rule that a marching band's contest routine be completed within the **8 minute time limit**. The end of the performance should be clearly evident in the design of the show (i.e. final set, end of the wind music, drum major bows, etc.) In the event that the end of the show is not clearly defined, it is the responsibility of the director to indicate to the official time keeper the ending point of the performance. **Continued marching and playing after that point that is not for the sole purpose of clearing the field will be interpreted as a continuation of the performance and the band shall be penalized one rating.**"

--- Dick Floyd
UIL State Music Office

Incident Weather/Clearing the Field

WISD Stadium is equipped with the Thorguard Lightning Prediction System. In case of imminent danger due to lightning, the system will activate by way of a siren blast. If this occurs, the contest will stop immediately, including the performance on the field.

Participating groups should take the following actions in event of a weather alarm event:

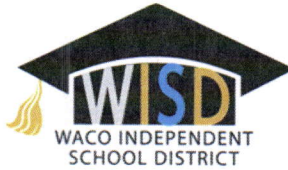
- Group performing on the field – Stop playing immediately and exit the stadium via the south ramp under the scoreboard. Leave the pit and props in place and remove your group to your buses. Load the students and remain until an all clear is given.
- Group waiting to perform (on west deck adjacent to field house) – Turn your group around and leave the stadium area. Return to your buses and load the students until an all clear is given.
- Group at water tables – Move to your buses, load your students, and wait for the all clear signal.
- Groups in warm up – Leave the warm up area immediately. Return to your buses and load the students until an all clear is given.
- All other groups – Return to your buses immediately and load the students until an all clear is given.

The contest staff and region secretary will make final determinations for restarting the contest.

Electronics / Portable Generator Use

If your band performance requires the use of an electrical supply (generator), you may be allowed use of that portable generator unit by signing the *WISD Electric Generator Containment and Compliance Form* on the following page.

Bands are responsible for the safety measures and standards of the equipment they bring to the contest, as well as any damages those electronics, generators or other devices utilized in contest caused to WISD Stadium and/or Marching Field.



WISD Electric Generator Containment and Compliance Form

I, _____, as the representative of _____ ISD
(PRINT MARCHING BAND DIRECTOR NAME) (SCHOOL DISTRICT NAME)
and _____ High School, affirm that I am the responsible party
(PRINT HIGH SCHOOL NAME)
for all electric production devices and / or generators used in the UIL Region 8 Marching Contest today, October 20, 2012.

I affirm that the electric device and / or generator that I have brought for performance are self-contained, appropriately maintained and will not leak, fume or emit any other form of damage, harm or productive residue on the Waco ISD Stadium Complex or Marching Field.

I affirm that our electric device and / or generator has been authorized and approved for our use by school administration (as acknowledged below by signature.)

I acknowledge that, if my electric device and / or generator does emit any type of residue or leakage of any type onto the field, I am responsible, along with _____ ISD to pay for any cleaning, repairs or corrections caused to the WISD Stadium Complex or Marching Field.

I acknowledge that, if this form is not submitted between today, September 28, 2012 and our arrival to the contest Check-In on October 20, 2012, I will not be allowed to bring our electric device / generator on to the field for practice or performance.

Band Director Signature

Date

Representative Principal / Fine Arts Director Signature

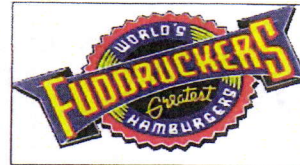
Date

Waco ISD Athletic Vendor List

RICK HERNANDEZ-MANAGER

(254) 214-5900

FAX: (254) 776-5098



JAKE ROYE-OWNER

(254) 776-5668

(254) 644-6420



KEITH BUSH-OWNER

(254) 744-3551

(254) 662-3153



ARMANDO CAMPOS-MANAGER

(254) 772-6611

FAX: (254) 772-6219



GREG TALASEK-MANAGER

(254) 752-3650

FAX: (254) 753-0558

Michna's BBQ

RACHAL MORALES/WILLIAM RIVERA

(254) 741-9283

(254) 741-9612



TOM GAITAN

(254) 662-0677

(512) 964-3282



Marching Band Photography

Provided by
Jolesch
PHOTOGRAPHY

Scan this
QR code
with your
smartphone
for a link to
our website!



We take great pride in our reputation, history of success,
and innovation in photographing marching bands.

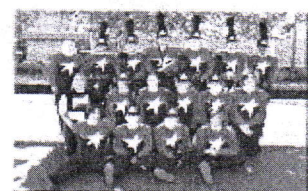
Color Guard



Drum Line



Seniors



DIRECTOR!! PLEASE POST THIS FLYER IN A HIGHLY VISIBLE AREA!



Students will be allowed to order immediately after the group photo is taken.

Or TAKE ADVANTAGE of a special group pre-order offer. Order a minimum of 30 band prints for only \$15 each, totaling \$450. This saves each student or family \$12 per print, including free shipping. **Also**, receive a free DVD with **ALL** of your band's action images if you purchase one group print for **each** member in the band.

To take advantage of the above offer, have your band boosters give us a call at 800-833-6769 x1124 or email Bands@Jolesch.com

Students that sign up after the group photo will receive a direct email link to our website at www.jolesch.com and a proof mailer to view, change, or pay for photos. To **SAVE** \$\$ on individual orders, **Please** allow your students to order at the event! All photos will be available online within a week!

Action Images

